

THE LEARNING CURVE



in association with The Concrete Society

ISCHEBECK TITAN LTD

SUPPLIERS OF FORMWORK, FALSEWORK AND GROUND ENGINEERING SOLUTIONS



1990-2010

20th Anniversary



On November 16th 1990 Ischebeck Titan Ltd officially registered its Formwork and Ground Engineering divisions within the UK. Originally operating on a small plot of land rented from piling and foundation engineers, Roger Bullivant, Ischebeck Titan Ltd has, in 20 short years, evolved into an international group of companies.

Since the summer of 1996 the company has been operating from a new purpose built distribution centre and head office in Burton upon Trent, Staffordshire. All research and development, together with ongoing project design and detail is carried out from a central drawing office facility in the North of England. A qualified team of sales engineers service the business via a national sales network.

Ischebeck Titan's design and sales teams work closely with customers at an early stage of project development. This way, ultimately the best possible product solution is adopted and maximum efficiency

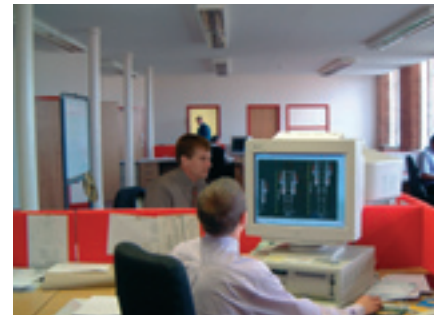


is inherited by the build programme. All detail drawings are colour coded for ease of reading on site and utilise Auto Cad 2008, together with bespoke equipment macros. The 'Span' beam programme is utilised to produce calculations in order to substantiate the structural integrity of the proposal. Health and safety product tool box talks are made available together with on site product training. Live sites receive regular on going technical support throughout the life of the project.

February 2006 saw Ischebeck Titan make the domestic acquisition of Cambridgeshire based Inform UK Ltd. Since 1982 Inform have been successfully supplying formwork plus a comprehensive range of consumable concrete and reinforcement accessories both in the UK and overseas. Through Inform UK, Ischebeck Titan are now able to provide a greater choice of formwork product solutions together with an extensive range of fully compatible accessories, chemicals and membranes to the concreting industry.

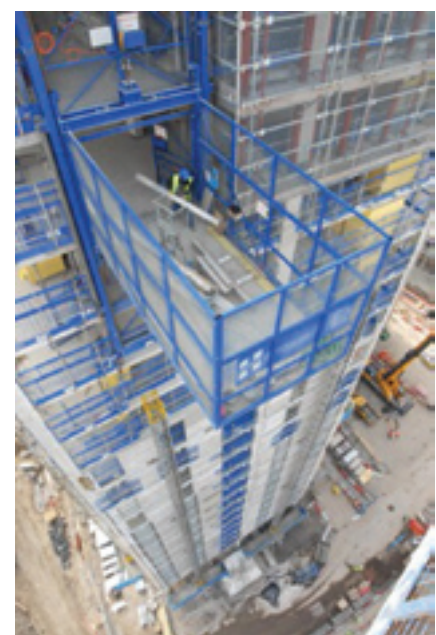
In 2005 Ischebeck Titan supplied a major portion of the formwork and falsework to the new Dubai airport project. During this involvement the full potential that the Middle Eastern region offered was quickly realised. In 2006 Ischebeck Titan (ME) LLC was launched. Since then the Titan ME team have serviced numerous prestigious projects within the gulf region and, in spite of the current slow down are continuing to show year on year growth.

To meet the demands of the ever changing construction market, Ischebeck Titan invest heavily in product development and innovation. Indeed, Ischebeck Titan were the first formwork company to introduce the 'full height'



wind shields and hydraulic formwork hoist to the perimeter of multi storey developments in the UK.

Ischebeck Titan's membership of a variety of professional organisations ensures that the company is kept abreast of the latest changes made to industry legislation. With additional support from parent company, Ischebeck GMBH, founded in Germany in 1881, Ischebeck Titan's collective disciplines enable the group of companies to offer innovative, high quality Ground Engineering and Formwork solutions practically anywhere in the world.



Web: www.ischebeck-titan.co.uk Email: sales@ischebeck-titan.co.uk Tel: 01283 515677

Email us to request your complete product literature CD, including Method Statements and Technical Data Sheets



2009 Achievements

In 2009 Ischebeck Titan was shortlisted for two of the industries best known awards; the GROUND ENGINEERING AWARDS and the CONSTRUCT AWARD 2009 for Innovation and Best Practise.

The CONSTRUCT AWARDS for Innovation and Best Practise are held to recognise innovation and its demonstrated benefit in the use of structural concrete in the UK. The 2009 Awards saw Ischebeck Titan Ltd shortlisted for the use of their Full Height Safety Screens at MediaCityUK. The Judges were looking for; beneficial impact on the concrete industry, practicality, suitability for replication, economy and value for money, simplicity and lastly, sustainability.

The GROUND ENGINEERING AWARDS honour successful individuals or projects that have demonstrated

innovation, sustainability and value engineering. Ischebeck Titan's entry was a basement development project carried out on a grade II listed property. The excavation involved creating a protection zone for trees immediately above site. Surrounding soil was removed using mining techniques and Micropiles were inserted between the tree roots. The judges commented that this was "A neat project with strong environmental attributes and sound technical solutions."

For more details, visit our website: www.ischebeck-titan.co.uk/News

Titan Support

The Titan support system is universally recognised as the leading product in its field by many professionals in the construction and civil engineering industries.

Comprising two main components; legs and frames, together with a comprehensive range of accessories, the Titan support system offers one of the quickest, most effective and versatile means of providing rapid support and access solutions in a variety of applications.

The system can be used in both a 'flying table' and erect and dismantle application and is ideal for multi-storey structures, reservoirs and one off support projects where mobility and ease of handling are required.

The majority of components are manufactured from high grade aluminium to patented designs. The Titan support system possesses an exceptionally high strength to weight ratio which facilitates rapid erection, whilst its excellent corrosion resistance and robust build quality assure long term durability. A full range of decking beams complement the system together with a full range of safety components which provide operative protection throughout the fabrication and working stages of the contract.



The Titan support system is designed to reduce labour costs, increase site efficiency, improve safety and meet the demands of today's construction and civil engineering techniques.

Climbtrac—Vertical Climbing Formwork

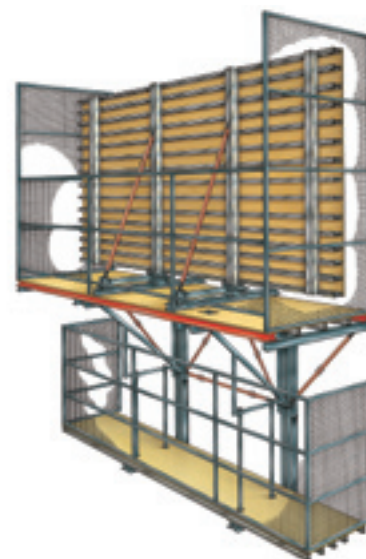
Climbtrac is a vertical track based system, which enables contractors to move a working platform, together with necessary formwork, up the face of a concrete core or shear wall without the need to disconnect and reconnect the system to the structure itself.

Suitable for use on vertical surfaces, such as lift/service shafts, stair wells and external perimeter walls, Climbtrac has

been designed to allow for the safe crane lifting of platforms together with wall forms, whilst remaining captive on the concrete structure during lifting operations.

During construction, the Climbtrac system is lifted vertically along its track by crane. When one storey is complete, the shutters are simply rolled back from the concrete face, new track sections are fitted and the system hoisted to the next storey. Track sections can either be left in place for removal at a later stage of the project or removed from the platform and passed through trapdoors for use on subsequent levels as construction progresses. All work takes place within the safe confines of the 3mtr high mesh steel cage.

Climbtrac not only offers the potential for time and cost savings through more efficient working methods, but also makes a significant contribution towards safety as it removes the need for



potentially dangerous manoeuvring of the formwork system from the building during construction.

FULLY HYDRAULIC VERSION NOW AVAILABLE - "CLIMBTRAC AUTO"





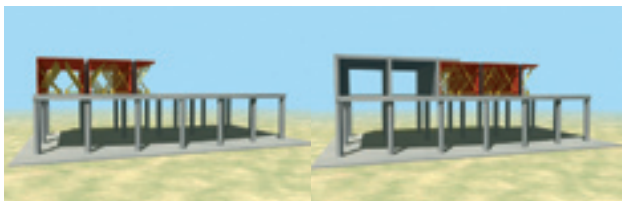
Full Height Screens

Full-height, mesh-faced safety screens are becoming the norm on high-rise construction projects throughout the UK as health and safety officers in the construction industry become aware of the safety and productivity benefits they deliver. Fully compliant with EN13374, the European standard for edge protection systems, the screens create a sturdy, secure barrier around the perimeter of the working area and cover several storeys at once.

The screens are held captive on rails that run vertically on the side of the structure and can be quickly and easily moved between storeys by crane or electric hoist.

The steel mesh on the panels allows natural light into the working areas between decks and provides ventilation to keep dust nuisance to a minimum whilst still offering a very effective barrier against wind.

The high levels of security that the screens instil in workers actually enhances efficiency on site, proving that installing high degrees of safety does not necessitate a compromise in productivity.



Outinord Tunnel Form

Tunnel Form is a steel formwork system that allows you to pour walls and slabs in one operation.

The main component of the system is the half tunnel. Two half tunnels joined together form the complete tunnel form. Once concrete has been poured, and minimum strength has been achieved, the half tunnel units are removed, and, if required a continual back prop can be installed before the adjacent half tunnel has been stripped. This guarantees no adverse deflection of the slab.

The tunnel is tailored to fit the room width, height and length (16m long typically) by the inclusion of infill sections which form an integral part of the tunnel. Follow on trades can begin work on the cells after each days striking and the high quality steel faced finish massively reduces the cost and time involved in 'wet trade' activity

Tunnel Form is a high precision system which is fast and user friendly and can effectively half precious crane time



**Ischebeck
Titan Ltd are sole
distributors of
Outinord Tunnel
Form in the
United Kingdom**

NOEtop

NOEtop is a high strength formwork panel system used for efficient casting of walls in a wide variety of applications. The NOEtop range possesses one of the largest panels on the market, 5.3m x 2.65m (14.05m²) with a working pressure of up to 88kN/m².

With its integrated, built in strong backs the NOEtop panel is a versatile system which can transform itself from modular large panel pours to more complicated, intricate, cellular layouts with ease. The NOEtop system also ensures a safe work place with self-locking walkway brackets that can be positioned on either a horizontal or vertically placed panel. Easy and safe stabilising of the forms can be achieved using push pull props.

Frames and profiles are hot-dip galvanised both inside and out ensuring a long and economical service life. All panels are provided with cast iron corner blocks to provide further protection.

The NOEtop panel system is available in a variety of panel sizes together with a wide range of internal, external and hinged units for additional flexibility.



HV Decking

The Titan HV panel decking system provides a rapid, versatile and efficient means of erecting soffit support without the need for loose ply wood sheets and their associated costs.



Lightweight and easy to use, Titan HV comprises just three main components and can be erected and dismantled by only two operatives without the need for special tools, making it one of the least labour intensive systems on the market.

With all erection and dismantling undertaken from beneath the deck itself, Titan HV minimises requirements for working at height and makes a major contribution to site safety.

The system's modular nature simplifies the entire process, naturally creating a 1.8m grid that is self setting. This, combined with the system's drop-head, allows for early stripping and re-use of beams and panels whilst maintaining automatic backpropping.





Ground Engineering Solutions

Ischebeck Titan is renowned throughout the world's civil engineering and construction industries for providing some of the most innovative and effective solutions. The Ischebeck Titan self-drilling, self-grouting injection anchors provide rapid, economic solutions for a wide variety of ground engineering and structural stabilisation projects, without the need for time-consuming casing procedures.

With load ranges up to 3500kN and the ability to be installed in confined and limited access situations, the Ischebeck Titan solution offers enormous versatility for applications across the construction, infrastructure and civil engineering industries.

Early consultation can deliver significant cost and time saving benefits over traditional methods in temporary and permanent works applications.



Anchor Piles

Anchor Piles provide a rapid, efficient method of installing tie back anchors in a single visit to the drill hole. Installation allows the Anchor Pile to be simultaneously drilled, installed and grouted, offering benefits in ground improvement, type of machinery and increased productivity on site.

Soil Nails

Soil nailing is an efficient, effective and economical method for earth reinforcement which allows a controlled improvement of the stability of the soil. Simultaneous drilling and grouting enables Ischebeck Titan Soil Nails to maximise the shear value at the grout/ground interface, rapidly creating a load bearing monolithic structure and maximising project progress.



Micropiles

Injection Micropiles are ideal for use as both compression and tension piles, mini piles and root piles in micropiling situations. Particularly suited to sites where working space is restricted, the Micropiles do not require casing and provide an extremely fast and effective solution.

Rock Bolts

Rock Bolts provide a short, low capacity reinforcement comprising a bar grouted into the rock and, if required, tensioned to a predetermined load. Our solution consists of a drill bit attached to a hollow steel tendon, which is simultaneously drilled, installed and grouted, to provide ground improvement.

IT500 Solid bar

The IT500 bar is a high yield reinforcing steel with hot rolled deformations specially designed to form a thread along the entire length of the bar. IT500 offers a competitive alternative to standard rebar in any application where thread joints with couplers or nuts are required, such as in reinforced concrete and ground engineering applications.



Ischebeck Titan (ME) LLC
PO Box 22385
Ajman
United Arab Emirates

00971 674 83101

sales@ischebeck-titan.ae



Suppliers of Concrete Reinforcements and Concrete Accessories

Web: www.informuk.co.uk

Email: general@informuk.co.uk

Tel: 01223 862230

